

STEWART LUBRICANTS AND SERVICE SLS-1XA

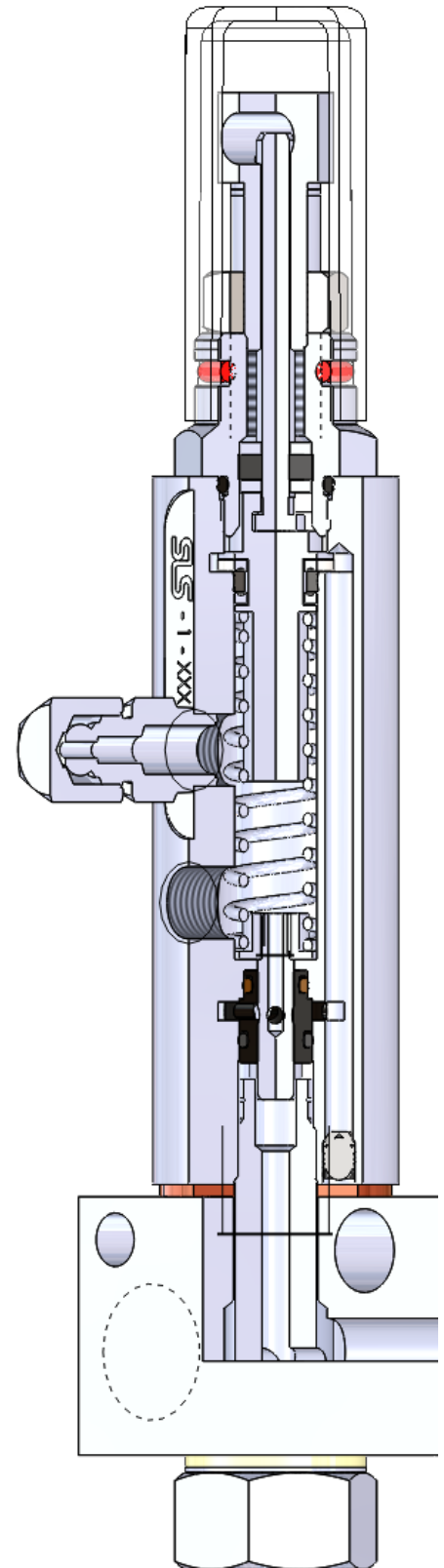
SPECIFICATIONS

ADJUSTABLE OUTPUT: 0.008 cu-in min / .080 cu-in max

MINIMUM OPERATING PRESSURE: 1,850 PSI

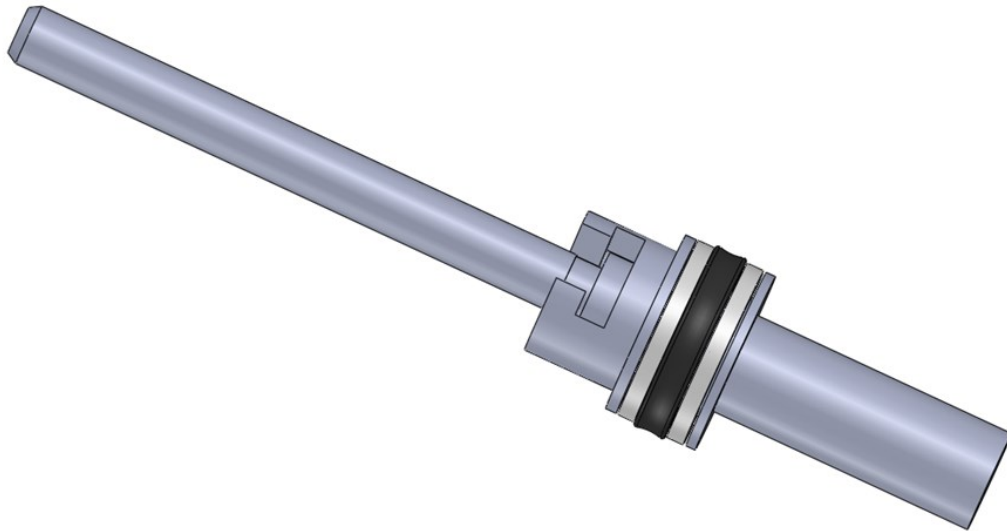
MAX OPERATING PRESSURE: 5,000 PSI

VENT PRESSURE: 600 PSI



STEWART LUBRICANTS AND SERVICE SLS-1XA

UPPER CHAMBER

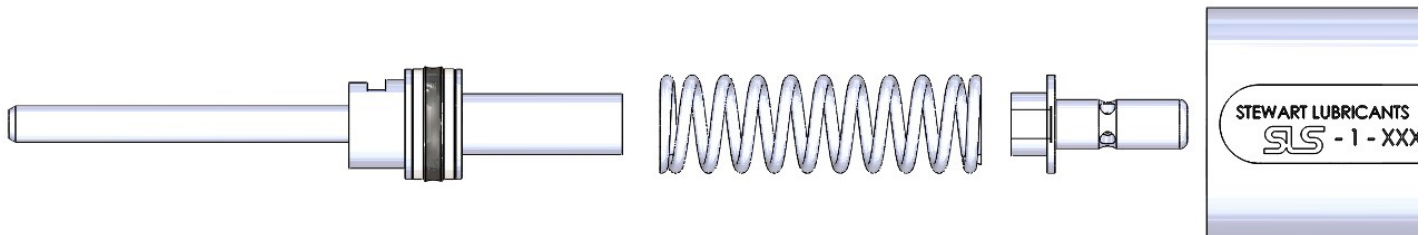


UPPER CHAMBER PERFORMANCE FEATURES

PISTON: TWO PIECE "FLOAT PIN" DESIGN

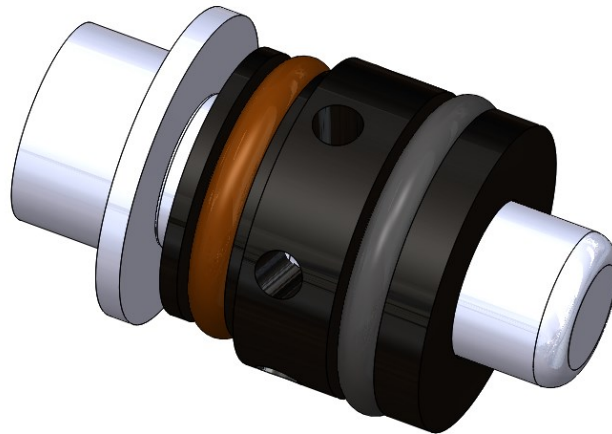
QUAD RING WITH UPPER AND LOWER TEFLON BACK UP RINGS

SPRING: CHROME SILICON VALVE SPRING QUALITY



STEWART LUBRICANTS AND SERVICE SLS-1XA

LOWER/INLET CHAMBER



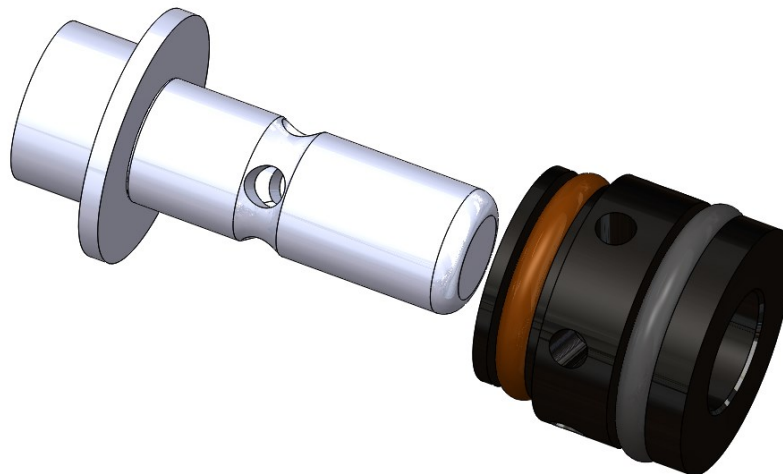
INLET CHAMBER PERFORMANCE FEATURES

PLUNGER FLOW PATH: 0.196 PATH FULL 360° FLOW SLOT

“X” BUSHING: MATCH HONE FIT

6 HOLE FLOW PATH / ORING STATIC SEAL “no rubber glands”

PLUNGER: 4 HOLE PATH



STEWART LUBRICANTS AND SERVICE SLS-1HO

SPECIFICATIONS

ADJUSTABLE OUTPUT: 0.035 CU-IN MIN/ .305 CU-IN MAX

MINIMUM OPERATING PRESSURE: 1,850 PSI

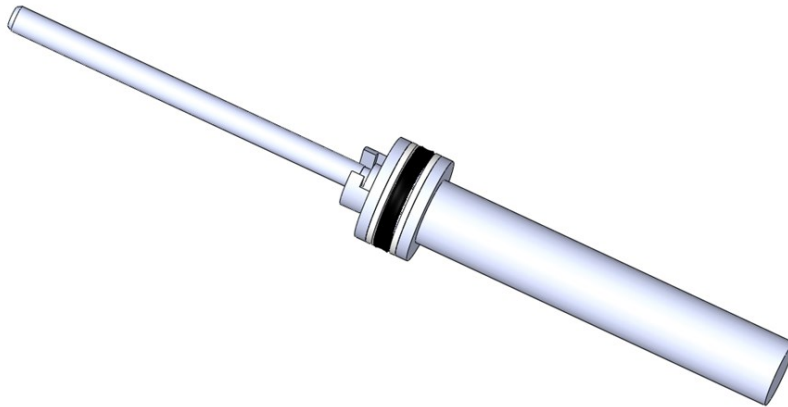
MAX OPERATING PRESSURE: 6,000 PSI

VENT PRESSURE: 1,000 PSI



STEWART LUBRICANTS AND SERVICE SLS-1HO

UPPER CHAMBER



UPPER CHAMBER PERFORMANCE FEATURES

PISTON: TWO PIECE "FLOAT PIN" DESIGN

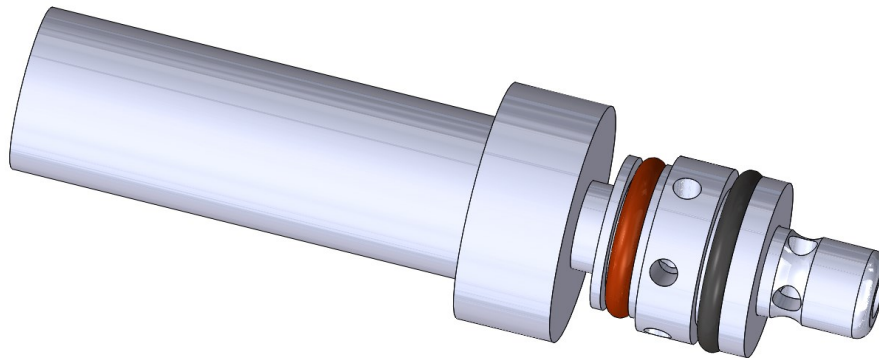
QUAD RING WITH UPPER AND LOWER TEFLON BACK UP RINGS

SPRING: CHROME SILICON VALVE SPRING QUALITY



STEWART LUBRICANTS AND SERVICE SLS-1HO

LOWER/INLET CHAMBER



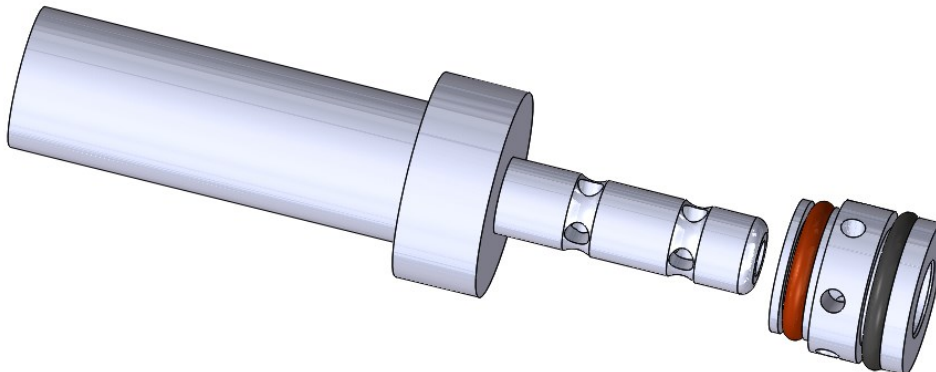
INLET CHAMBER PERFORMANCE FEATURES

PLUNGER FLOW PATH: 0.196 PATH FULL 360° FLOW SLOT

“X” BUSHING: MATCH HONE FIT

6 HOLE FLOW PATH / ORING STATIC SEAL “no rubber glands”

PLUNGER: 4 HOLE PATH



STEWART LUBRICANTS AND SERVICE SLS-11

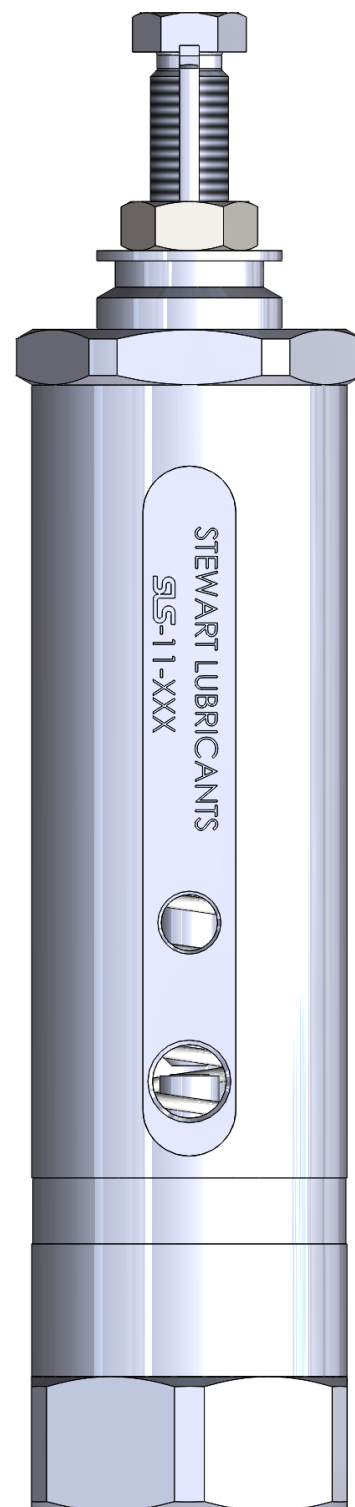
SPECIFICATIONS

ADJUSTABLE OUTPUT: 0.050 CU-IN MIN / 0.500 CU-IN MAX

MINIMUM OPERATING PRESSURE: 1,000 PSI

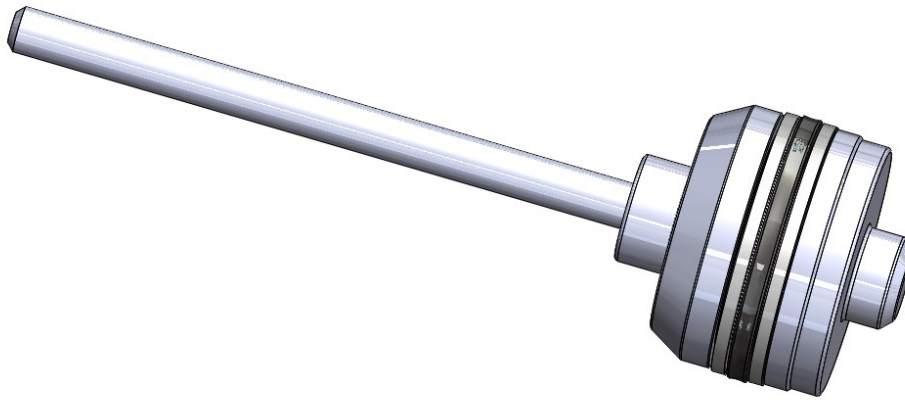
MAX OPERATING PRESSURE: 5,000 PSI

VENT PRESSURE: 800 PSI



STEWART LUBRICANTS AND SERVICE SLS-11

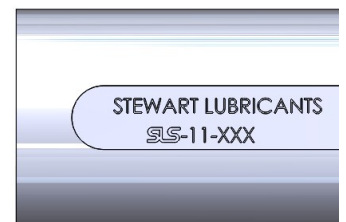
UPPER CHAMBER



UPPER CHAMBER PERFORMANCE FEATURES

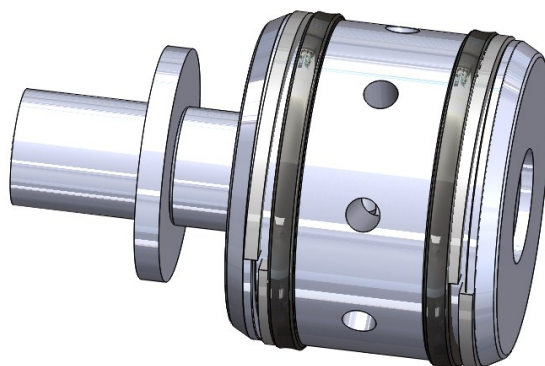
**PISTON: QUAD RING WITH UPPER AND LOWER TEFLON BACK
UP RINGS**

SPRING: CHROME SILICON VALVE SPRING QUALITY



STEWART LUBRICANTS AND SERVICE SLS-11

LOWER/INLET CHAMBER



INLET CHAMBER PERFORMANCE FEATURES

PLUNGER FLOW PATH: 4 X 1/8" HOLES

SLIDE VALVE BODY: MATCH HONE FIT

8X 1/8" HOLE FLOW PATH, QUAD RING WITH BACK UP RINGS

